

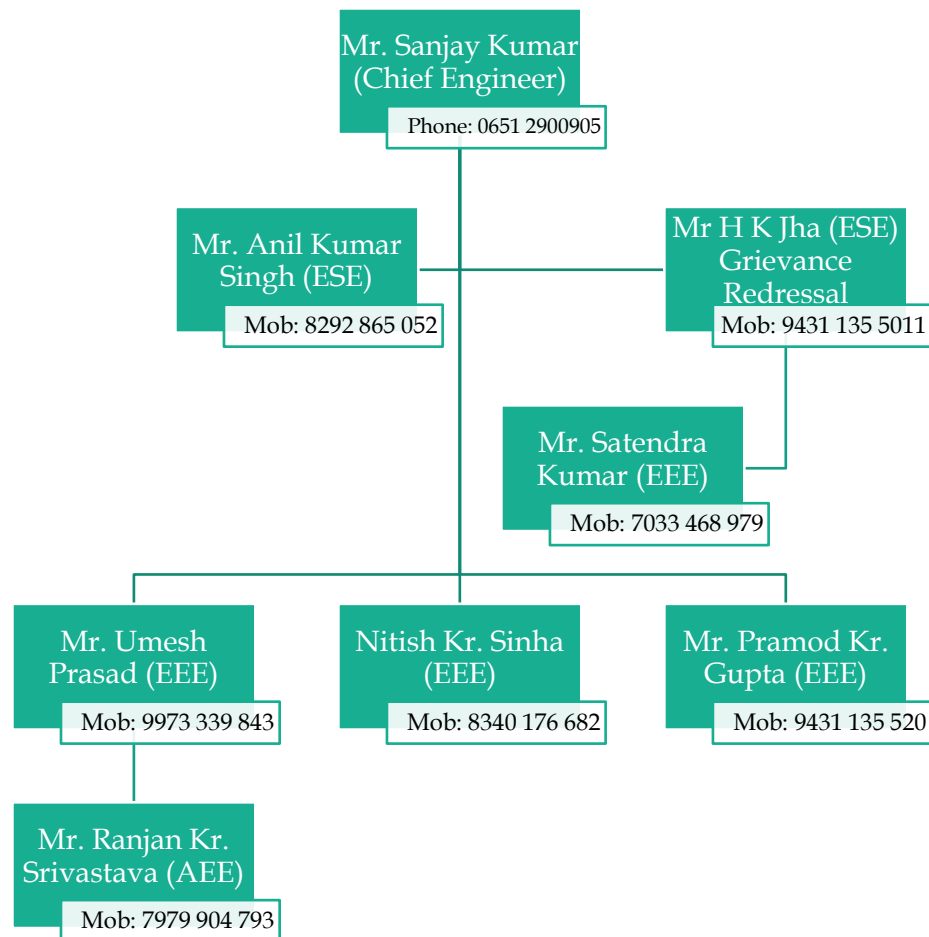
S&D Department

Department Hierarchy & Key Responsibilities

The department of Supply & Distribution (S&D) is one of the pillars in JBVNL Organizational hierarchy along with other major departments such as Commercial & Revenue (C&R), Rural Electrification and Store & Purchase (S&P). In JBVNL set-up, S&D department is responsible for Operation & Maintenance of the electrical system covering all 33KV, 11KV & 440/220 Volt power distribution system.

Departmental Hierarchy

The department of S&D is being headed by Mr. Sanjay Kumar (Chief Engineer), based out of JBVNL HO at Ranchi. The department is ably supported by the team of officials spread across HO and Circle Offices in Jharkhand. Top-level hierarchy of S&D is presented as below -



Email IDs:

Mr. Sanjay Kumar - cesd.jseb@gmail.com

Mr. Nitish Kr. Sinha - nitish.39@gmail.com

Major Operations of S&D Department

S&D plays an important role in JBVNL working environment by ensuring the infrastructure is in place within the State of Jharkhand. Along with O&M activities, S&D also gets allocation under ADP budget head to carry-out Capital Expenditure at the Circles. The department tracks progress under the following major heads -

<i>Name of Work</i>	Work Details
Regular Activities	
<i>Budget Preparation</i>	Expenses under S&D dept. along with other major departments of JBVNL such as S&P, Civil and IT are managed thru ADP budget head. The department is responsible for tracking expense vis-à-vis allocation under this budget head as well as preparation of budget for next financial years
<i>Ensuring Network Reliability</i>	S&D thrives to maintain the JBVNL network in good health by tracking parameters such as Power Availability, Peak Demand Report, Network reliability, Burnt Transformer replacement etc.
Special Activities	
<i>School Electrification</i>	S&D has taken-up progress -tracking of School Electrification in state of Jharkhand. Electrification has been taken-up under three categories <ul style="list-style-type: none"> - Schools with requirement of only Service Connection - Schools with requirement of Service Connection as well LT Extension - Schools with requirement of Service connection, LT extension, HT extension and DSS installation
<i>Work Progress under DVC Command Area</i>	JBVNL has taken up Capex. Work under DVC Command area to cater to requirements of end Consumers. The dept. of S&D is tracking progress of all such activities (e.g. Erection of line, Line extension / maintenance etc.)
<i>Other Work Areas</i>	S&D is overseeing progress under various other Capex. Schemes such as Deposit Work, Industrial Area - JIADA, Other works (IIT, IIM, Police Picket), Utility Shifting etc.
<i>Progress Tracking under PFA and meeting compliance w.r.t. MoP/ CEA reports</i>	S&D is responsible for tracking work-progress under 24*7 PFA along with preparation of necessary reports to be submitted by JBVNL from time to time such as Distribution Perspective Plan, CEA report on DISCOM performance etc.

Additionally, the department also looks into the following work areas -

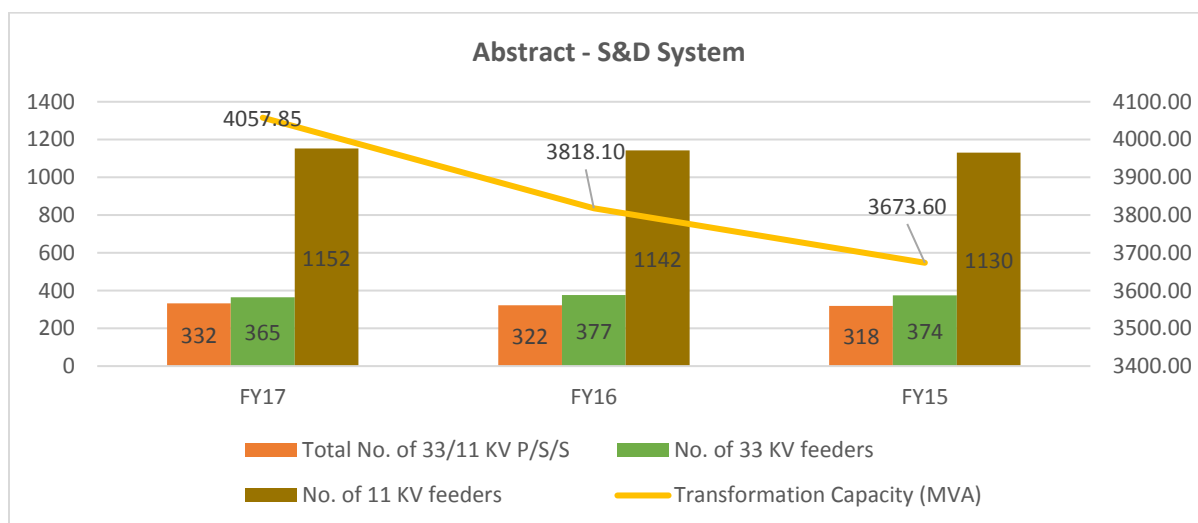
- Asset Details (Summary of Number of P/S/S & DT, Length of line & Consumer details)
- Status of Various spill-over Work at Electricity Circles (with completion date)
- Setting-up of Meter testing Labs

Abstract of Present S&D System in JBVNL

An abstract of major infrastructure being maintained and monitored by JBVNL is as below -

Head	FY17	FY16	FY15
Total No. of 33/11 KV P/S/S	332	322	318
Transformation Capacity (MVA)	4057.85	3818.10	3673.60
No. of 33 KV feeders	365	377	374
Length of 33 KV Feeders (Km)	7546.74	7520.74	7406.46
No. of 11 KV feeders	1152	1142	1130
Length of 11 KV feeders (Km)	52547.18	52884.41	52658.30
No. of Distribution Transformer (63 KVA & above)	30704	31312	28148
No. of Distribution Transformer (25 KVA & below)	40617	40411	40611
Length of LT lines (Km)	81444.77	79761.09	79367.95
HT:LT Ratio (Line)	0.74	0.76	0.76
HT:LT Ratio (Consumer)	0.10	0.09	0.09

Progress on key parameters are as shown below -



Target & Milestone

S&D, under its' operational philosophy, sets measurable targets every year against budgeted allocation. The works include Capital expenditure for infrastructure improvement as well as DPR preparation for assessing new requirements and tracking progress under schemes such as PFA & UDAY. The department has also taken-up the all-important task of implementing JBVNL Procurement Manual practices w.r.t. Vendor management and tendering process. A summary of S&D targets and achievements for FY18 are as given below -

Sr. No.	Work	Target	Milestone/ Achievement
1	Ensuring Safety at workplace	As a number of people have been involved at various sites performing regular operations, S&D takes responsibility of ensuring a healthy and safe working environment	JBVNL Operations & Maintenance Manual has been prepared keeping EHS aspects in mind
2	Preparation of ADP Budget	S&D expenses are linked with ADP budget head and it is required to maintain clarity regarding expenses vis-à-vis budget allocation	The department has given ADP Budget preparation utmost importance and the same is prepared in collaboration with Circles, by means of collecting Circle-wise estimation data
3	Introduction to Technology	It is deemed required to upgrade the standard of Meter Testing Labs operational at various Circles of JBVNL to cater to testing of automatic meters with latest specification. At present, many of the Meter Test Benches are semi-automatic, which may be revamped along with setting-up of new Test Benches	DPR for Meter Test Benches is being finalized and the department shall float tender w.r.t. the same
4	Progress Monitoring of S&D Activities	The department has increased scope of work as well as monitoring by going for web-based MIS formats. They are also looking into implementation of practices as per Procurement Manual. The same gives rise to the requirement of structured monitoring of on-field as well as online activities	S&D has collaborated with external Consultants and the joint-working group has been instrumental in implementing better monitoring support of the activities
5	Monitoring of TRW	Ensuring timely maintenance of Power Transformers has been earmarked as an important area under S&D Operations	The practices of Transformer Repairing Workshop has been revamped by implementing online TRW monitoring platform. It is also decided to tag transformers in advance so that repairing-log of transformers can be maintained in a more systematic manner
6	Ensuring Power Supply Quality	Keeping the infrastructure maintained and quick turn-over for maintenance jobs	The same is ensured by deployment of independent consultants at Circles and ensuring periodic flow of reliable data